

Volume 12, Issue 1

Winter-Spring 2017



RUSSELL SAGE COLLEGE

Carriage House Notes English and Modern Languages

EML to Host A. Robin Hoffman, PhD.



Mark your calendars for Tuesday, February 28th, at 6 p.m. in Cowee IV. The English program will be hosting a lecture by A. Robin Hoffman entitled, "Children's Literature and Edward Gorey's Audiences." Hoffman will discuss and showcase the various artistic influences on Gorey's work, from Victorian illustrations in children's literature to the work of Surrealists. Hoffman is an Assistant Curator of Exhibitions and Publications at the Yale Center for British Art. Reception to follow. To learn about Edward Gorey, visit the following website: <http://www.edwardgoreyhouse.org/>

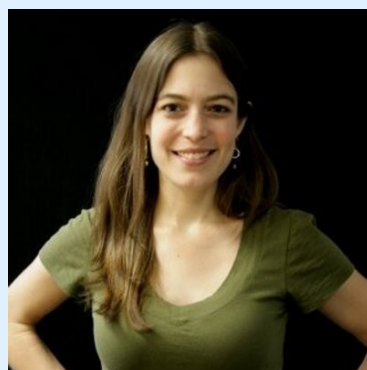
Visit the English
and Modern Languages website at
www.sage.edu/english for more
information and photos!

Dr. Teri L. Varner to Speak at RSC

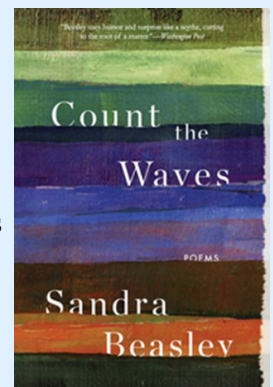
Dr. Teri L. Varner, Associate Professor of Communications at St. Edward's University in Austin, TX, will give a talk on Wednesday, March 15, at 1pm in Bush Memorial. Her lecture is titled, "Sticks and Stones May Break Your Bones but Words are Lethal Weapons," and addresses issues related to gender and language. Varner is one of the first African American women in the nation to lead a Department of Communication. She holds a Ph.D. in Communication with an emphasis in Performance Studies from the University of Texas at Austin. She teaches basic courses in communication, communication theory, nonverbal communication, public speaking and active listening. Her talk is free and open to the public.



Sandra Beasley Book Reading & Signing



Russell Sage College will welcome Sandra Beasley as the 2017 Carol Ann Donahue Poet. Beasley, a poet and non-fiction writer, is the author of three poetry collections, most recently *Count the Waves* (WW Norton, 2016). In work that is often touching and funny, the *Washington Post* notes, "Beasley uses humor and surprise like a scythe, cutting to the root of a matter." Her 2012 book *Don't Kill the Birthday Girl: Tales from an Allergic Life*, mixes memoir, cultural history, and science to shed insight onto her food allergies (which brought Beasley to refer to herself as "Allergy Girl"). Beasley will read from her work on Wednesday, April 12, at 1pm in Bush Memorial. Her reading is free and open to the public, with a book signing to follow.



It is the program faculty's expectation that every English and Modern Languages major attend each program-sponsored event. It is vital that you show your support for our events.

The Sage Colleges

Russell Sage College
Sage College of Albany
Sage Graduate School



RSC's Dr. Tonya Moutray Discusses New Book

Join us as Dr. Tonya Moutray (Associate Professor of English, The Sage Colleges) discusses the research problems and opportunities she encountered when conducting research for her book, *Refugee Nuns, the French Revolution, and British Literature and Culture* (2016). Her talk connects the challenges and stereotypes women refugees faced in war-torn France to the religious and ethnic discrimination experienced by Syrian refugees today. A WORLD Series event, Dr. Moutray's talk will take place on Wednesday, January 25, at 1pm in Bush Memorial.

16-17 Program Club Leaders

The Russell Sage Review: Editor, Annie Scorcia, scorca@sage.edu

Medusa: The Writer's Community: President, Mariama Suso, susom@sage.edu

Sigma Tau Delta: President, Kelly Shanahan, shanak@sage.edu

Spanish Club: President, Kelly Clinton, clintk@sage.edu

The Quill: Editor-in-Chief, Kelly Shanahan, shanak@sage.edu

Get involved! Contact these club leaders for details.
New members are especially welcome.

Medusa

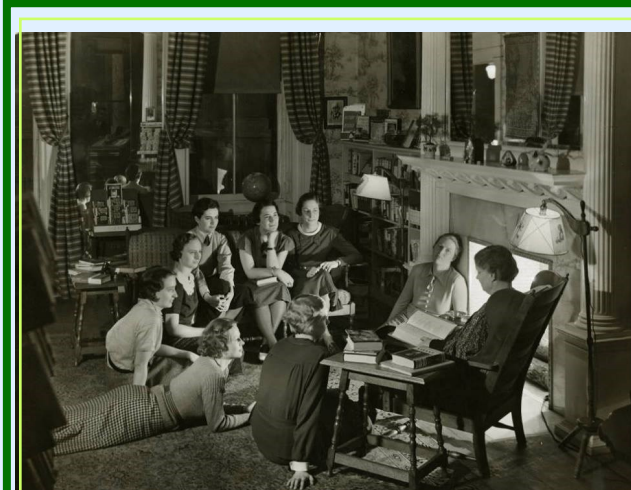
Medusa is Russell Sage's campus-wide creative writing and poetry club. They meet each week to discuss both student and faculty produced work, as well as the poetry of published authors. Meetings take place in the Poetry Room of the library, which affords the opportunity to explore the works of many poets, and to further an understanding of poetry. Under the guidance of Dr. Kelley, members learn to critique their work and share it with other creative writers in a relaxed and encouraging environment. As a community of writers, they participate in the EML Spring Poetry Blitz, and present "Wild Women of Poetry," which supports the annual "Girl Stuff" drive for the YWCA in Troy. Medusa is currently looking for new members and executive council leaders! Questions? Interested in joining? Please contact Dr. Kelley at: kellee@sage.edu OR Mariama Suso, President of Medusa, at susom@sage.edu

Spring at Theater Institute at Sage

- February 24-March 5: *I Never Saw Another Butterfly*
- April 5-15: *Radiance: The Passion of Marie Curie*
- May 31-June 11: *Freckleface Strawberry*

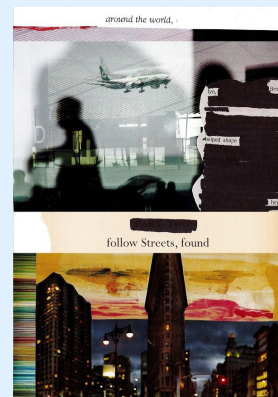


The Quill is Russell Sage College's student newspaper. It is currently looking for writers and other staff members. If interested, please contact the current Editor-in-Chief, Mary Witkowski, at witkom@sage.edu. The paper goes to press every other week when classes are in session. Meetings are Tuesdays 4-5pm, French House Annex, Moliere.



1935: Eight RSC students are gathered in the campus bookstore, *The Frigate*, as bookstore employee Hilda Pinckney reads from a book in front of the fire place.

In April 2016, students, faculty and staff at the Sage Colleges gathered together to create a blackout poetry collection to celebrate National Poetry Month. The resulting work was so amazing that the Sage Colleges Libraries decided to publish some of the poetry from that special event. We look forward to another fun student-generated poetry project this April!



Study Abroad!

There are some truly incredible opportunities for study abroad. Take advantage of them while you can. Your undergraduate years are the ideal time to go abroad, earn credit, and have an eye-opening cultural and intellectual experience. And you can study just about anywhere in the world. It's not as expensive as you might think. Have a look at the Sage Study Abroad homepage at:



www.sage.edu/academics/global_education

OR attend one of the following presentations:

-Presentation by AIFS (global opportunities): Friday, January 20, 11am, Shea Poetry Room

-Presentation by ARAVA Institute (Israel): Monday, February 13, 11am, Shea Poetry Room

OR visit with Dr. David Salomon, Director of Study Abroad (salomd@sage.edu).

Important Dates

- Spring Semester Classes Begin: January 17
- Last Day for Add/Drop: January 24
- Spring Break: March 4-12
- Last Day to Withdraw from a Course: April 7
- Undergraduate Research Day: April 26
- Last Day of Classes: April 28
- RSC Baccalaureate: May 12
- Commencement: May 13

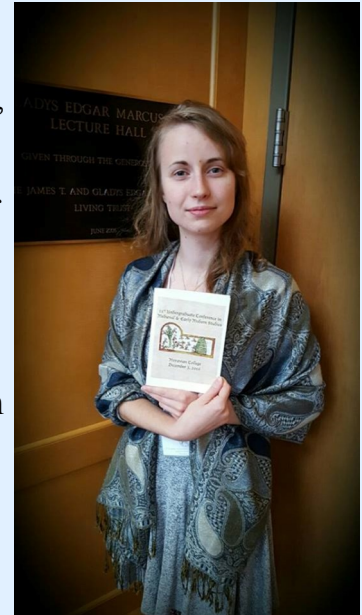
Language Study at Sage

Sage's Culture and Language Acquisition Program (CLAS), in an agreement with and with the support of Rosetta Stone, offers French, German, Italian, Mandarin Chinese, Arabic, Russian and Portuguese. Please contact Dr. Kate Kagan (kagane@sage.edu) for more information, or visit:

<https://www.sage.edu/academics/russell-sage-college/culture-and-language-acquisition-at-sage/>

RSC English Students Present

Junior English major Sofia Berry presented her paper, "The Divine Heavenly Sound: The Significance of Musical Expression and Secret Language for Hildegard of Bingen," at the 11th Undergraduate Conference in Medieval and Early Modern Studies on December 3, 2016 at Moravian



College in Bethlehem, PA. The paper was written originally for Dr. David A. Salomon's Medieval Literature course. Congratulations, Sofia!

RPI's EMPAC is just up the road from RSC on the corner of 8th St and Congress. They offer a wide variety of lectures, films, and performances, and most are free. See the Spring 2017 Preview Schedule at:

<http://empac.rpi.edu/news/2017/01/06/spring-preview-2017>

The New York State Writer's Institute at the University at Albany features a dynamic list of authors, readings, and films. See the complete Spring schedule at:

<http://www.albany.edu/writers-inst/>



Salomon's Little Free Bookshelf

Dr. Salomon is trying to weed through his immense book collection. Throughout the semester, he will be stocking "Professor Salomon's Little Free Bookshelf" outside his office in French House Annex. Feel free to look at what is there and take what you'd like. He would like these books to find loving homes.

New Facebook Group!

Current EML students at RSC should join the Facebook group: “English and Modern Languages at Russell Sage College.”



Internships can be a vital part of your education and can often lead to a permanent job upon graduation. Ask your professors if they are aware of any internship opportunities this Spring!



WORLD Series

The WORLD Series schedule for Spring 2017 is posted below. All events are on Wednesdays at 1pm in Bush Memorial, and are free and open to all.

- Jan 25: Dr. Tonya Moutray (Associate Professor of English, Sage Colleges), “Refugees Past and Present.”
- Feb 1: Peace Corps Veteran and Activist John Kucij on Liberia.
- Feb 8: Author and Activist Phyllis Bennis on “ISIS, Syria & the US in the Middle East.”
- Feb 15: Brenda Kenneally (independent film maker) “Upstate Girls: Unraveling Collar City.”
- March 15: Dr. Teri L. Garner, “Sticks and Stones May Break Your Bones but Words are Lethal Weapons.”
- April 5: Wild Women Poetry Reading, sponsored by Medusa, Russell Sage College’s Creative Writing Group.
- April 12: The 2017 Carol Ann Donahue Poetry Reading: Sandra Beasley.

Carriage House Notes was created 12 years ago by Dr. David Salomon. As of this issue, he has generously handed over the writing & publishing process to the EML Secretary, Ms. Liz Romero. It is no small feat to gather all the information, compose it in a professional manner, and create a layout that is appealing and useful to all at Sage. If you see Dr. Salomon, please congratulate him on a job very well done. As of this issue, any questions or comments about the newsletter should be directed to Ms. Liz Romero. Contact her at 518-244-2237 or romere@sage.edu. Thank you, Dr. Salomon!



Writing Studio

REMINDER: The Writing Studio is available for any kind of writing assistance. Relocated to the third floor of the new Shea Library, the Studio has posted hours and tutor schedules outside the office. The Writing Studio will reopen after classes resume. To make an appointment, call 244-6737 or stop by.

Visit them on the web at:

<https://www.sage.edu/academics/academic-advising/> OR

<https://hub.sage.edu/document/academic-support>

Members of Dr. David A. Salomon's Fall 2016 Honors Seminar on "Heaven and Hell" visited the Metropolitan Museum of Art in NYC in November to see the "Jerusalem: 1100-1400 Every People Under Heaven" exhibition. They also looked at funerary and burial items in the Egyptian and Greek halls.



16-17 Program Directory

- Dr. Kate Kagan. Modern Languages Program Director (kagane, x2238, Carriage House #3)
- Dr. Elizabethe Kelley (kellee, x 4586 Carriage House #7)
- Mr. Matthew Klane (klanem, x4559 French House Annex)
- Dr. Tonya Moutray, English Program Director and Department Chair (moutrt, x2406, Carriage House #5)
- Dr. Shealeen Meaney (meanes, x2404, Carriage House #1)
- Dr. David A. Salomon (salomd, x3118, French House Annex)
- Ms. Liz Romero, Department Secretary (romere, x2237, Carriage House #2)