

SMALL COLLEGE

BIG FUTURE





2

CAMPUSES

11:1

**STUDENT/FACULTY
RATIO**

2,500

TOTAL ENROLLMENT

3 hrs

TO NYC OR BOSTON

50+

**BACHELOR'S, MASTER'S
& DOCTORAL PROGRAMS**

**BEST COLLEGE
FOR SOCIAL MOBILITY**

#14

U.S. News & World Report
2022-2023

**BEST VALUE
NATIONAL UNIVERSITIES**

#36

U.S. News & World Report
2022-2023





WE BELIEVE MAKING THINGS PERSONAL IS JOB #1.

We can show you many impressive numbers associated with Russell Sage College, but let's make it clear — you will never feel like a number.

College is about establishing connections. This is a community where we care about one another. Professors and staff go out of their way to be helpful. Students are open and friendly, and they'll definitely have your back.

It takes all of us working together to create the college experience you want and need.

At Russell Sage College, we're here for you.



TEST SCORE OPTIONAL

You're more than a number on a test. We care about how you'll fit in with us.

94%

OF GRADUATES EMPLOYED
OR CONTINUING THEIR
EDUCATION THROUGH
GRADUATE SCHOOL
(within six months of graduation)

100%

PARTICIPATION
IN INTERNSHIPS,
SERVICE LEARNING
OR RESEARCH



WE'RE A SMALL COLLEGE with a BIG heart.

Walk across campus and your professors are likely to stop you and ask how you're doing.

You'll never feel alone. If you're falling behind, you'll know where to grab a helping hand. And, when the time comes to explore new directions, you'll know who's ready to go exploring with you.

"Sage is a place that makes you feel like you're not alone. You know that if you have a problem there's someone ready to help you. Everybody here wants you to succeed. It's actually pretty amazing."



VINCENT PRUCHNICK '22

*Major: Childhood Education
South Glens Falls, NY*

"This has been everything I wanted in a school. Everyone here knows you by your name. It's like a second family."



ELLENROSE DUFFY '21

*Major: History
Liberty, NY*



YOU'LL BE A good kind of busy.

ACADEMIC AREAS

Art and Design
Business
Creative and Performing Arts
Education
Health Sciences
Law and Public Policy
Liberal Arts
The Sciences

With two campuses and many graduate programs, Russell Sage College is packed with opportunities to study, learn and grow.

We've got 50 degree programs, state-of-the-art science labs, two theaters and a business incubator.

Connect to your career choices with internships, service learning and student teaching opportunities.

We live in an increasingly global society, so we'll help you grow in your awareness of global issues through an innovative curriculum, international students and well-traveled faculty.

"Sage is going to give you a very personalized education. You're going to make deep friendships. And you'll have access to some fairly renowned academic programs with big impacts in the community."

TONYA MOUTRAY
Professor of English



UNDERGRADUATE PROGRAMS

- Academic Exploration
- Art and Extended Media (B.F.A.)
- Biology (B.A. or B.S.)
- Business Administration (B.B.A. or B.S.)
- Childhood Education (B.S.)
- English, Writing and Culture (B.A.)
- Graphic + Media Design (B.F.A.)
- Health Sciences (B.S.)
- History (B.A.)
- Interior + Spatial Design (B.F.A.)
- Law and Society (B.S.)
- Legal Studies (Certificate)
- Musical Theatre (B.S.)
- Nursing (B.S.)
- Nursing RN (B.S.)
- Nutrition Science (B.S.)
- Organizational Studies (B.P.S.)
- Physical Education (B.S.)
- Pre-Medical Studies Post-Baccalaureate (Certificate)
- Psychology (B.S.)
- Public Health (B.S.)
- Sociology (B.A.)
- Sport and Recreation Management (B.S.)
- Theatre (B.A.)

ACCELERATED and/or LINKED PROGRAMS (Undergraduate to Graduate)

- Business Administration (B.B.A. or B.S.) to MBA - Sage
- Health Education 4+1 (BS to MS) - Sage
- Law BA/BS to JD - Sage and Albany Law School
- Occupational Therapy 3+2 (B.A./B.S. and M.S.) - Sage
- Occupational Therapy 4+2 (B.A./B.S. to M.S.) - Sage
- Physical Therapy 3+3 (B.A./B.S. and D.P.T.) - Sage
- Physical Therapy 4+3 (BA/BS to D.P.T.) - Sage
- Physician Assistant BA/BS and MS - Sage and Albany Medical College

MAJORS

GRADUATE PROGRAMS

SCHOOL OF ARTS AND SCIENCES

- Forensic Mental Health (M.S.)
- Forensic Mental Health (Certificate)

ESTEVE'S SCHOOL OF EDUCATION

- Art Education (M.A.T.)
- Educational Leadership (Ed.D.)
- Applied Behavior Analysis and Autism (Online M.S.)
- Childhood/Literacy Education (M.S.)
- Childhood/Special Education (M.S.)
- Literacy Education (M.S. Ed.)
- Literacy/Special Education (M.S.)
- Professional School Counseling (M.S.)
- Professional School Counseling (Advanced Certificate)
- School District Leader (Advanced Certificate)
- School Health Education (M.S.)
- Special Education (M.S. Ed.)

SCHOOL OF HEALTH SCIENCES

- Physical Therapy (D.P.T.)
- Community Psychology (M.A.)
- Counseling and Community Psychology (M.A.)
- Nursing (M.S.)
- Nursing (Post-Master's Certificate)
- Applied Nutrition (Online M.S.)
- Dietetic Internship (Advanced Certificate)
- Nutrition and Dietetics (M.S.)
- Occupational Therapy (M.S.)
- Occupational Therapy (O.T.D.)

SCHOOL OF MANAGEMENT

- Business Administration (MBA)*
- Health Services Administration (M.S.)*
- Organization Management (M.S.)*

*Available online and on-campus

START
HERE,
stay
here!

11:1
student/faculty
ratio

16
average
class size



REMARKABLE and brave

Are you looking for a career that will test the limits of your character? Want a great life purpose? Check out all we have to offer in the Health Sciences, Mental Health, Public Health, Health Services Administration, School Health Education, Nutrition Science and Pre-Medical Studies. In the field of education, we have programs like Childhood Education, School Counseling, Special Education and Educational Leadership.



ALUMNI SPOTLIGHT

WALLACE TURNER LAW, LLP

Two Russell Sage College alumnae, Kimberley Wallace and Raysheea Turner, started the only law firm owned and operated by Black women in the Capital Region in February 2020.

“Sage let me know anything is possible. The sky’s the limit. I value education very highly. It’s what you need if you want your voice to be heard.”

RAYSHEEA TURNER '11

Attorney and Founding Partner of Wallace-Turner Law

“Sage has been the foundation of everything I am and hope to be. I tell the students, ‘Don’t give up, even when the challenges get rough. Because it’s not where you start, it’s where you finish that matters.’”

KIMBERLEY WALLACE '10

Attorney and Founding Partner of Wallace-Turner Law



Live well *AND FEEL WELL.*

College is about being on your own, making friends and having great new experiences.

We've built all this into the Russell Sage experience.

We want you to like where you live. Our students enjoy hanging out in the dining halls and cafes. They look forward to working out.

You'll be invited to join clubs and become part of campus traditions.

We make student life comfortable and inviting, so you can have the college experience you always imagined.







HOUSING

First-year students are housed on the campus where their academic program is located, to make it easy to get to classes, study sessions, the library and lab facilities.

DINING

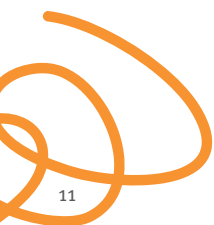
We specialize in innovative menus, flexible meal plans and special dietary need requests.

SPORTS/FITNESS

From group fitness classes to club sports and outdoor education, you'll find so many ways to exercise, have fun, or compete at whatever skill level you want.

CLUBS AND ORGANIZATIONS

If you're looking for ways to make more friends and maybe take on a leadership role, we've got a club or organization for that.



Thrive@ RUSSELL SAGE

We're committed to educating the whole person.

Stress can negatively affect academic performance, personal relationships and overall well-being. That's why we created Thrive@RussellSage.

Building on our reputation in the health sciences, Thrive@RussellSage extends beyond the classroom to focus on bringing well-being to all aspects of a student's life.

THE WOMEN'S Institute

The Women's Institute at Russell Sage College offers public programs with a focus on promoting meaningful discussion of contemporary women's issues. The Institute also offers an undergraduate curricular program.



"Sage does a very good job of making women feel empowered."

NOORA AHMED '23
Women's Institute Ambassador



ATHLETICS

Russell Sage College has many student-athletes who excel both on and off the field and serve in leadership roles across our two campuses.

VARSITY SPORTS

Coed:

eSports

Men:

Baseball

Basketball

Cross Country

Golf

Indoor Track and Field

Lacrosse

Soccer

Outdoor Track and Field

Volleyball

Women:

Basketball

Cross Country

Field Hockey

Golf

Indoor Track and Field

Lacrosse

Soccer

Softball

Tennis

Outdoor Track and Field

Volleyball

Empire 8 is one of the most well-respected conferences in Division III. Its other members are: Alfred University, Elmira College, Hartwick College, Houghton University, Keuka College, Medaille University, Nazareth College, St. John Fisher University, Utica University



For students interested in a career in sports, we offer programs in Sport + Recreation Management, Physical Therapy and Physical Education, among others.





21

Men's and Women's
sports teams, NCAA
Division III Empire 8
Conference

“The very best thing that can happen for me is after one of my players graduates, she gets in touch to invite me to her wedding. That means I’ve made an impact. That’s success. They know how much I cared about them.”

COACH ALLISON COLEMAN
Women's Basketball







TROY

One college. *TWO CAMPUSES.*

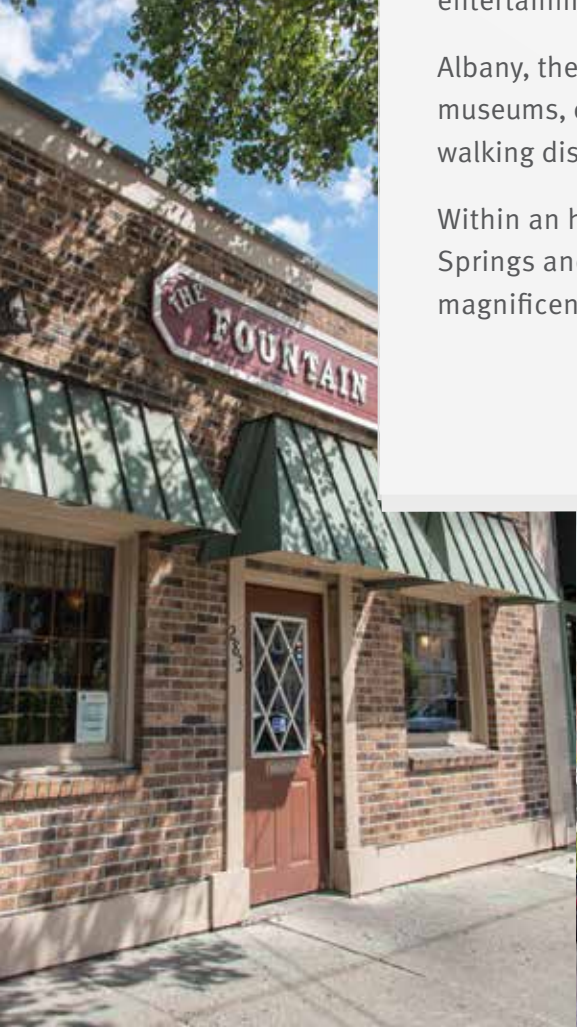
A TALE OF TWO CITIES.

Charming and historic, Troy offers a lively downtown with intimate cafes, unique shops and so many great places to eat. There's also plenty of live music and entertainment.

Albany, the state capital of New York, has theaters and museums, concert halls and popular bistros — all within walking distance of our Albany campus.

Within an hour's drive, you can visit famed Saratoga Springs and Lake George. A bit further north await the magnificent Adirondack Mountains.

ALBANY



The Sage Shuttle
takes students
between the Troy and
Albany campuses
for classes and
to participate in
activities.





ALUMS

*WE'LL PUT YOU ON
THE PATH TO SUCCESS.*

We've got a reputation for turning out grads who know their stuff. Employers and grad schools tell us they find our students highly motivated and prepared.



Jennifer Nissley '10,
Author of *The Mythic Koda Rose*

"I'd always had this vague idea of wanting to be a writer, but it took years of tinkering and exploration for me to understand what that might mean or look like for me. It can be so intimidating sitting in a room full of talented writers waiting to dissect your story or poem, but thanks to Sage, I never doubted that I deserved to be among them."

Meghan Dillon '18

After graduating from Sage, Meghan was accepted into the prestigious Case Western Reserve University combined Dietetic Internship and M.S. in Public Health Nutrition degree program, which is ranked among the top 10 master's programs of its kind in America.






John Johnson '19

John was accepted into the UAlbany master's program in communications. He hopes this leads to a career as a motivational speaker, a talk show host, or to a position that helps him reach young people who need help in achieving their own dreams.



Emily Noel '18

Just two years after graduation, Emily was promoted to the position of design coordinator at an architectural firm in Boston.



Taneesha Beebe '16, MD

"Sage was the place where I found my voice and found myself. I started undergrad being extremely shy and reserved and left accomplishing things I couldn't even imagine myself doing. When I got to medical school, I felt like I was prepared for anything and everything."



Tyler Rondeau '18, '20

After earning his undergraduate degree in Sage's Physical Education program, Tyler completed his master's in School Health Education while teaching at an elementary school in Vermont. He also coaches soccer, wrestling and baseball at Hoosick Falls high school.

To read their full stories, go to sage.edu

VISIT US One college. Two campuses.



OFFICE OF ADMISSION
admission@sage.edu

To schedule a campus tour or attend an admission event, visit: **sage.edu/admission**

ALBANY CAMPUS
140 New Scotland Avenue
Albany, NY 12208
518-292-1730

TROY CAMPUS
65 1st Street
Troy, NY 12180
518-244-2217

